

## **Historic, Archive Document**

Do not assume content reflects current scientific knowledge, policies, or practices.



6201

---

---

# WHOLESALE PRICE LIST

" FOR NURSERYMEN ONLY

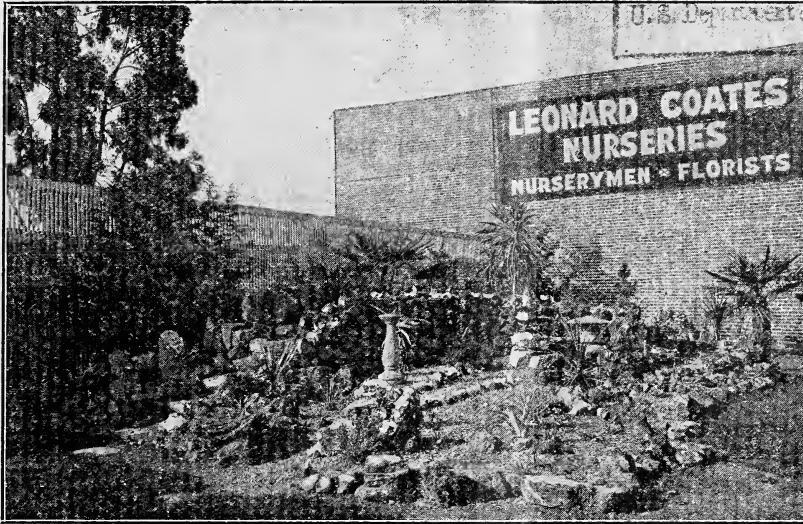
SEPTEMBER - 1928

LIBRARY

RECEIVED

★ JAN 28 1928 ★

U.S. Department of Agriculture



ESTABLISHED 1878

# Leonard Coates Nurseries

INCORPORATED

Wholesale Growers

OF

EVERGREEN AND DECIDUOUS ORNAMENTALS —  
CONIFERS — LINING-OUT STOCK — ROSE STOCKS  
BUDED FRUIT TREES — FRUIT TREE SEEDLINGS

Nurseries at MORGAN HILL — SANTA CRUZ — BRENTWOOD

Main Office

San Jose . . . California

MEMBER CALIFORNIA ASSOCIATION OF NURSERYMEN  
PACIFIC COAST ASSOCIATION OF NURSERYMEN

---

---

# Terms and Conditions of Sale

Please Read Carefully

**VISIT OUR NURSERIES**, where will be found beautiful, healthy stock, grown under ideal conditions. We grow at Morgan Hill, Santa Cruz and Brentwood, where we can produce the best stock, free from serious pests and diseases.

**TERMS**—All prices quoted are net. Five per cent (5%) discount for cash with order. All bills due and payable 30 days from date of invoice unless otherwise arranged. Remittance or references must accompany orders from unknown correspondents.

**ALL ORDERS** are accepted subject to cancellation or change, on account of prior sale, depletion of stock, or other conditions beyond our control. All shipments are sent at purchaser's risk. This list cancels all previous quotations. Prices on application for stock not listed.

**CLAIMS** of any kind will not be allowed unless reported within 10 days after receipt of goods.

**PACKING** is done in the most careful way and a charge is made to cover cost of material only.

**STOCK** quoted in this list will be furnished 5 at 10 rate and 50 at 100 rate.

**CONTRACTS** for growing ornamentals, lining out stock, **FRUIT TREE SEEDLINGS**, budded trees and rose stocks are solicited.

**NATIVE CALIFORNIA TREES AND SHRUBS** are in demand. Our Nurseries are headquarters for this class of stock, and for your convenience they are marked with an (\*) in this list.

**GUARANTY**—While we exercise the greatest care to have all stock true to name, we give no warranty, expressed or implied, and in event that stock is proven not true to name, we shall be liable only for the sum paid for such stock.

**DESCRIPTIVE CATALOG** of fruit trees and ornamentals mailed on request.

**EXPLANATION OF ABBREVIATIONS**—B., balled. B.R., bare roots. ft., feet. in., inches. P., pot. Qt., quart can. Gal., 1-gallon can. 2½g, 2½-gallon can. 5g., 5-gallon can.

## Leonard Coates Nurseries, Inc.

Established 1878

R. D. Hartman, Pres.

L. H. Durden, Secty.-Treas.

Marion E. Gregory, Mgr. Fruit Tree Dept.

# Fruit and Nut Tree Department

For many years we have grown our fruit tree and ornamental **Seedlings** and **Budded Fruit Trees** near Brentwood, Contra Costa County, California. Experience has proven that we have here all the factors for the quality and quantity production of sturdy plants, with ideal fibrous root systems, which when transplanted develop into first class trees.

Our nurseries are free from injurious pests, our stock is clean and can be shipped to all parts of the world.

Our long experience in packing for near or distant points is your assurance that your stock will reach you in good condition.

## SEEDLINGS

Our stock is grown from selected seed in well drained soil, which is sub-irrigated by a system at all times under perfect control.

We have no freezing weather to interfere with the proper growth and development of the trees, and our seedlings are freshly dug, carefully graded and packed for immediate shipment.

California seedlings grown in this location have proven the **BEST** for Pacific Coast or Eastern planting and as the Pioneer California Fruit Tree Seedling Growers, with 18 years experience, we are sure that a trial will convince you that we offer the **BEST**.

For best results plant clean, California grown seedlings, carefully graded and packed.

## FRUIT TREE SEEDLINGS

		¼ in.	No. 1	No. 2	No. 3
Apple .....	Per 1000		\$10.00	\$ 8.00	\$
Cherry (Mahaleb) .....	Per 1000		12.00	10.00	8.00
Cherry (Mazzard) .....	Per 1000	\$20.00	16.00	12.00	8.00
Peach .....	Per 1000	15.00	12.00	8.00	.
Pear (French).....	Per 1000	20.00	16.00	12.00	8.00
Pear (Calleryana) (Transplanted) .....	Per 1000		16.00	10.00	.
Plum (Myrobolan) .....	Per 1000	12.00	10.00	8.00	6.00
Quince (Rooted Cuttings) .....	Per 1000		16.00		

## ROSE STOCKS

### Rooted

Manetti .....	Per 1000	20.00—5-9 mm.
Multiflora Japonica .....	Per 1000	15.00 12.00 8.00
Odorata .....	Per 1000	20.00—5-9 mm.

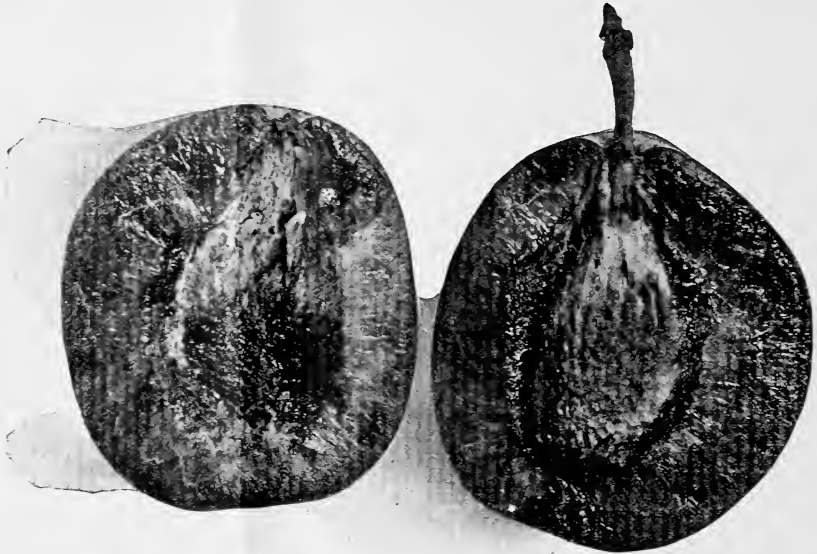
## ORNAMENTAL SEEDLINGS

Catalpa speciosa .....	Per 1000	15.00 12.00
Fraxinus velutina (Arizona Ash) .....	Per 1000	15.00 12.00 10.00

Samples will be sent upon request.

The Japanese pear root has been largely responsible for **Black-End**, **Yellowing conditions** and **"Apple"** or **Round Bartletts"** It is also subject to **Oak Root Fungus**.

By using **French Pear Seedlings** for inarching, these conditions may be corrected.



COATES 1418 FRENCH PRUNE

## BUDEDDED FRUIT TREES

	10 rate Each	100 rate Each
APRICOTS. 6 to 8 ft.....	\$ .35	\$ .30
4 to 6 ft.....	.30	.25
NECTARINES. 6 to 8 ft.....	.40	.35
4 to 6 ft.....	.35	.30
PEACHES. 6 to 8 ft.....	.35	.30
4 to 6 ft.....	.30	.25
PEARS. 6 to 8 ft.....	.35	.30
4 to 6 ft.....	.30	.25
PLUMS. 6 to 8 ft.....	.35	.30
4 to 6 ft.....	.30	.25
PRUNES (Try Coates 1418 Improved French-A proven, profitable variety.)		
6 to 8 ft.....	.35	.30
4 to 6 ft.....	.30	.25
QUINCES. 6 to 8 ft.....	.40	.35
4 to 6 ft.....	.35	.30

## NUT BEARING TREES

	10 rate Each	100 rate Each
ALMONDS. 4 to 6 ft.....	.35	.30
3 to 4 ft.....	.30	.25
WALNUT SEEDLINGS (No. Calif. Black)		
4 to 6 ft.....	.30	.25
3 to 4 ft.....	.25	.20
2 to 3 ft.....	.17½	.12½

## SUB-TROPICAL FRUIT TREES

LOQUATS (Budded)		
3 to 4 ft.....	1.60	
2 to 3 ft.....	1.25	
OLIVES. 5 to 6 ft.....	.60	
4 to 5 ft.....	.50	
POMEGRANATE. 2 to 3 ft.....	.30	
1½ to 2 ft.....	.25	
PERSIMMONS. 5 to 6 ft.....	1.15	1.00
4 to 5 ft.....	.85	.75
3 to 4 ft.....	.70	.60

We specialize in large size trees for family orchards and have a large and desirable variety. Write for list of varieties and quantities available.

# Ornamental Department

## CONIFERS

	10 rate	100 rate		10 rate	100 rate
	Each	Each		Each	Each
<b>ABIES balsamea. BALSAM FIR</b>					
8 to 10 in. 4P.....	\$ .40	\$ .35			
<b>A. firma. MOMI FIR</b>					
8 to 10 in. 4P.....	.40	.35			
<b>CEDRUS atlantica. MT. AT-LAS CEDAR</b>					
8 to 12 in. 5P.....	.40	.35			
1 to 1½ ft. 5P.....	.50	.45			
2 to 3 ft. B.....	1.50	1.25			
3 to 4 ft. B.....	2.00	1.50			
<b>C. deodora. INDIAN or HIMALAYAN CEDAR</b>					
10 to 16 in. Qt.....	.30	.25			
10 to 14 in. 4P.....	.35	.30			
1 to 1½ ft. 5P.....	.45	.35			
1½ to 2 ft. 6P.....	.50	.40			
2 to 3 ft. B.....	1.75	1.50			
3 to 4 ft. B.....	2.25	2.00			
4 to 5 ft. B.....	3.00	2.50			
<b>C. libani. CEDAR OF LEBANON</b>					
8 to 12 in. 4 P.....	.40	.35			
2 to 3 ft. B.....	1.75				
3 to 4 ft. B.....	2.25				
4 to 5 ft. B.....	3.00				
<b>CHAMAECYPARIS ericoides</b>					
10 to 14 in. Qt.....	.35	.25			
1 to 1½ ft. 4P.....	.45	.35			
10 to 12 in. B.....	.75	.65			
12 to 14 in. B.....	.90	.75			
<b>C. lawsoniana. LAWSON CYPRESS.</b>					
2 to 3 ft. B.....	1.35	1.15			
3 to 4 ft. B.....	1.75	1.50			
4 to 5 ft. B.....	2.00	1.75			
5 to 6 ft. B.....	2.50				
6 to 7 ft. B.....	3.00				
<b>C. lawsoniana alumi BLUE LAWSON CYPRESS</b>					
3 to 4 ft. 5g.....	2.25				
<b>C. pisifera nana</b>					
1 to 1½ ft. 5P.....	.55	.45			
1 to 1½ ft. 2½g.....	.70				
<b>C. pisifera plumosa. PLUME RETINOSPORA</b>					
2 to 2½ ft. 2½g.....	2.00				
1½ to 2 ft. B.....	1.75	1.50			
<b>CRYPTOMERIA elegans. PLUME CRYPTOMERIA</b>					
2 to 3 ft. B.....	1.35				
3 to 4 ft. B.....	1.85	1.60			
<b>C. Japonica JAP. REDWOOD</b>					
5 to 6 ft. B.....	2.25	2.00			
<b>CUPRESSUS arizonica. ARIZONA CYPRESS</b>					
10 to 14 in. Qt.....	.25	.20			
2 to 3 ft. Gal.....	.35	.30			
3 to 4 ft. 5P.....	.40	.35			
4 to 6 ft. 5g.....	1.75	1.50			
4 to 6 ft. B.....	1.75	1.50			
6 to 8 ft. B.....	2.25	2.00			
<b>C. betham knightiana</b>					
3 to 4 ft. B.....	1.75				
6 to 7 ft. B.....	3.00				
<b>* C. goveniana. GOWEN CYPRESS</b>					
4 to 5 ft. B.....	2.00				
5 to 6 ft. B.....	2.50	2.00			
6 to 7 ft. B.....	3.00				
7 to 8 ft. B.....	3.50				
<b>* C. macrocarpa MONTEREY CYPRESS</b>					
1½ to 2 ft. Qt.....	.20	.15			
4 to 6 ft. B.....	1.75	1.50			
6 to 7 ft. B.....	2.25	2.00			
<b>C. sempervirens. ITALIAN CYPRESS (Good Type)</b>					
2½ to 3 ft. Gal.....	.50	.40			
3 to 4 ft. Gal.....	.60	.50			
3 to 4 ft. B.....	1.00	.75			
4 to 5 ft. B.....	1.25	1.00			
5 to 6 ft. B.....	1.50	1.25			
6 to 7 ft. B.....	2.00	1.75			
<b>JUNIPERUS excelsa stricta GRECIAN JUNIPER</b>					
1 to 1½ ft. B.....	.90	.85			
1½ to 2 ft. B.....	1.15	1.00			
<b>J. virginiana RED CEDAR</b>					
2 to 3 ft. B.....	1.35				
3 to 4 ft. B.....	1.75	1.50			
<b>*LIBOCEDRUS decurrens CALIF. INCENSE CEDAR</b>					
10 to 14 in. 4P.....	.50	.40			
1½ to 2 ft. 5P.....	.60	.50			
3 to 3½ ft. B.....	3.00	2.50			
<b>PICEA excelsa NORWAY SPRUCE</b>					
2 to 3 ft. B.....	2.00	1.75			
<b>PINUS canariensis CANARY ISLAND PINE</b>					
2 to 2½ ft. Qt.....	.35	.30			
4 to 5 ft. Gal.....	.60				
2 to 3 ft. B.....	1.35				
3 to 4 ft. B.....	1.85				
<b>P. mughus DWARF MUGO PINE</b>					
1 to 1½ ft. B.....	1.50	1.25			





	10 rate Each	100 rate Each		10 rate Each	100 rate Each
<b>ACACIA pycnantha. (NEW)</b>			<b>CASSIA artemesoides</b>		
GOLDEN WATTLE			8 to 12 in. 4P .....	.35	.30
2 to 3 ft. Qt. ....	.45	.35	<b>CASSIA tomentosa</b>		
3 to 4 ft. Qal. ....	.55	.45	1 to 1½ ft. 4P .....	.35	.30
<b>ACACIA verticillata STAR ACACIA</b>			<b>CASUARINA stricta SHE OAK</b>		
2 to 3 ft. Qt. ....	.30	.25	3 to 4 ft. Gal. ....	.45	
3 to 4 ft. Gal. ....	.45	.35	4 to 6 ft. 2½g .....	.65	
<b>ACANTHUS mollis</b>			<b>*CEANOTHUS arboreus hybrida</b>		
1½ to 2 ft. 4P .....	.30		2 to 2½ ft. 4P .....	.40	.30
<b>*ADENOSTOMA fasciculatum</b>			<b>* C. incanus WHITE THORN</b>		
CHAMISE			1 to 1½ ft. 4P .....	.40	.30
2 to 2½ ft. 4P .....	.40		<b>* C. spinosus</b>		
<b>AGATHEA coelestis BLUE</b>			6 to 8 in. 3P .....	.20	.15
MARGUERITE			1 to 1½ ft. 4P .....	.40	
8 to 14 in. 4P .....	.20		2½ to 3 ft. 2½g. ....	.70	
<b>*AGAVE americana</b>			<b>* C. verrucosus</b>		
CENTURY PLANT			1 to 1½ ft. 4P.....	.30	.25
6 to 10 in. 4P .....	.25		1½ to 2 ft. 4P.....	.35	.30
<b>ALOE-SPOTTED 3P</b> .....	.25	.20	<b>CERATONIA siliqua CAROB</b>		
<b>ARBUTUS unedo</b>			TREE		
STRAWBERRY TREE			1 to 1½ ft. 4P.....	.30	.25
3 to 4 ft. B (Bushy).....	1.25	1.00	2 to 3 ft. 2½g .....	.60	.50
<b>BERBERIS darwini</b>			4 to 5 ft. 5g .....	1.00	
DARWINS BARBERRY			<b>CHOISYA ternata</b>		
1 to 1½ ft. 5P .....	.35	.30	MEXICAN ORANGE		
<b>BERBERIS elegantissima</b>			8 to 12 in. 4P .....	.35	.30
10 to 14 in. 4P .....	.30	.25	1 to 1½ ft. 5P .....	.50	.40
1½ to 2 ft. Gal. ....	.45	.35	3 to 3½ ft. B (Bushy).....	1.15	.90
2 to 3 ft. B .....	.85		<b>CINNAMOMUM camphora</b>		
<b>BERBERIS knighti</b>			CAMPHOR TREE		
8 to 12 in. 4P .....	.40	.30	3 to 3½ ft. Gal. (Branched) .....	.50	.40
1 to 1½ ft. 5P .....	.50	.40	4 to 5 ft. Gal (Trimmed).....	.65	.55
<b>BERBERIS stenophylla</b>			<b>CISTUS ladaniferus maculatus</b>		
10 to 16 in. 4P .....	.35	.25	SPOTTED ROCK ROSE		
1½ to 2 ft. 5P .....	.45	.35	2½ to 3 ft. 5P .....	.50	
3 to 4 ft. 5g .....	1.00		<b>C. rosea CRIMSON ROCK ROSE</b>		
<b>BERBERIS wilsonae</b>			2 to 3 ft. 4P .....	.40	.30
1 to 1½ ft. 4P .....	.30	.25	<b>C. salvifolium WHITE</b>		
1½ to 2 ft. 5P .....	.35	.30	ROCK ROSE		
1 to 1½ ft. B .....	.60	.50	1 to 1½ ft. 4P .....	.25	.20
2 to 3 ft. B .....	.85	.75	2 to 3 ft. Gal .....	.40	.30
<b>BUDDLEIA globosa GLOBE</b>			<b>COPROSMA baueri LOOKING</b>		
BUTTERFLY BUSH			GLASS PLANT		
3 to 4 ft. Gal .....	.50		1½ to 2 ft. 5P .....	.35	.30
<b>BUDDLEIA davidi magnifica</b>			2 to 3 ft. 2½g. ....	.80	.70
OXEYE BUTTERFLY BUSH			2 to 2½ ft. B .....	.90	.75
3 to 4 ft. Gal .....	.45		<b>CORDYLINE australis</b>		
<b>BUDDLEIA officinalis PALE</b>			DRACENA PALM		
BUTTERFLY BUSH			1 to 1½ ft. Qt. ....	.25	
3 to 4 ft. Gal .....	.45	.35	2 to 2½ ft. Gal. ....	.40	
<b>CALLISTEMON rigidus</b>			<b>CORNUS capitata EVERGREEN</b>		
BOTTLE BRUSH			DOGWOOD		
8 to 12 in. 4P .....	.30	.25	2 to 3 ft. 4P .....	.35	.30
2 to 3 ft. Qt. ....	.35	.30	<b>CORONILLA glauca</b>		
<b>CAREX GRASS variegated</b>			1 to 1½ ft. 4P .....	.25	.20
3P .....	.20	.15	<b>CORREA japonica alba</b>		
			1½ to 2½ ft. 4P .....	.40	.30

	10 rate	100 rate		10 rate	100 rate
	Each	Each		Each	Each
<b>COTONEASTER acuminata</b>			<b>C. hispanica SPANISH BROOM</b>		
3 to 4 ft. 5P .....	.50	.40	3 to 4 ft. Gal .....	.35	.30
4 to 5 ft. B .....	1.00	.90	4 to 5 ft. Gal .....	.50	.40
<b>C. franchetti</b>			4 to 5 ft. 2½g. ....	.60	.50
4 to 5 ft. 5g (bushy) .....	1.25		<b>C. hispanica nana DWARF</b>		
3 to 4 ft. B .....	1.00	.85	<b>SPANISH BROOM</b>		
<b>C. frigida</b>			1 to 1½ ft. 4P .....	.35	
3 to 4 ft. Gal .....	.55	.45	<b>C. (Genista) racemosus</b>		
2 to 3 ft. B .....	.70	.60	<b>EASTER BROOM</b>		
3 to 4 ft. B .....	.85	.75	8 to 12 in. 4P .....	.35	.30
4 to 5 ft. B .....	1.00	.90	<b>C. scoparius SCOTCH BROOM</b>		
<b>C. heroveana</b>			2 to 3 ft. 4P .....	.30	.25
2 to 2½ ft. 5P .....	.50		3 to 4 ft. Gal .....	.40	.35
3 to 4 ft. B .....	.90	.75	<b>C. scoparius andreana YELLOW</b>		
4 to 5 ft. B .....	1.25	1.00	<b>&amp; MAHOGANY RED FLOWERS</b>		
<b>C. horizontalis</b>			1 to 1½ ft. 4P .....	.45	.35
1 to 1½ ft. 5P .....	.40	.35	2½ to 3 ft. 5g .....	1.00	
1½ to 2 ft. 5g (Berried) .....	.85	.75	<b>DIOSMA ericoides BREATH-OF-</b>		
2 to 2½ ft. B (Berried) .....	1.15	.90	<b>HEAVEN</b>		
<b>C. microphylla</b>			8 to 12 in. 4P .....	.35	.30
1½ to 2 ft. 4P .....	.35	.30	16 to 18 in. B .....	.65	.55
2 to 3 ft. 5P .....	.50	.40	<b>D. reevesi</b>		
2 to 3 ft. 5g (Berried) .....	.90	.75	1½ to 2 ft. B .....	.75	.65
1½ to 2 ft. B (Berried) .....	.75	.60	<b>ELAEAGNUS pungens</b>		
2 to 2½ ft. B (Berried) .....	.90	.75	1 to 2 ft. 4P .....	.30	
2½ to 3 ft. B (Berried) .....	1.10	.90	2 to 3 ft. 5P .....	.40	
<b>C. microphylla thymifolia</b>			<b>E. p. maculata</b>		
8 to 12 in. 4P .....	.35	.30	1 to 1½ ft. B .....	.70	.60
1 to 1½ ft. B (Berried) .....	.75	.60	<b>ERICA gracilis HEATHER</b>		
<b>C. pannosa</b>			2 to 2½ ft. B .....	.80	.70
1½ to 2 ft. 4P .....	.30	.25	<b>E. mediterranea</b>		
2 to 3 ft. 5P .....	.35	.30	6 to 10 in. 4P .....	.35	.25
4 to 5 ft. Gal (Berried) .....	.50	.40	16 to 18 in. B .....	.65	.55
5 to 6 ft. 5g (Berried) .....	1.25	1.00	1½ to 2 ft. B (Bushy) .....	.85	.75
2 to 3 ft. B (Berried) .....	.65	.55	<b>E. mediterranea hybrida</b>		
5 to 6 ft. B (Berried) .....	1.15	.90	14 to 18 in. B .....	.65	.55
<b>C. rotundifolia PROSTRATA</b>			<b>E. melanthera</b>		
10 to 14 in. 4P .....	.40		1 to 1½ ft. 4P .....	.35	.30
2 to 2½ ft. B .....	1.00	.85	3 to 3½ ft. B (Bushy) .....	1.25	1.00
<b>C. salicifolia</b>			<b>E. persoluta alba</b>		
3 to 4 ft. B .....	1.00	.85	4 to 6 in. 4P .....	.30	.25
<b>C. schneideri</b>			1½ to 2 ft. B .....	.75	.60
1½ to 2 ft. 4P .....	.30	.25	2 to 2½ ft. B .....	.90	.75
3 to 4 ft. 5G .....	.80		<b>E. regerminans</b>		
2 to 3 ft. B .....	.65	.55	1 to 1½ ft. B .....	.75	.65
3 to 4 ft. B .....	.80		2 to 2½ ft. B .....	1.00	.85
<b>C. simsii</b>			<b>*ERIGONIUM fasciculatum</b>		
10 to 14 in. 4P .....	.25		<b>WILD BUCKWHEAT</b>		
<b>C. williamsi</b>			1 to 1½ ft. 4P .....	.30	
1½ to 2 ft. 4P .....	.30	.25	<b>ERIOBOTHRYA (Seedlings) Loquat</b>		
2 to 3 ft. B .....	.65		6 to 10 in. 4P .....	.25	
<b>CYTISUS canariensis</b>			1 to 1½ ft. 5P .....	.40	.30
4 to 5 ft. Gal .....	.40	.30	3 to 4 ft. 5g .....	.80	.70
5 to 6 ft. Gal .....	.50	.40	4 to 5 ft. 5g .....	.90	.80
<b>C. elatior</b>					
1 to 1½ ft. 4P .....	.35				

	10 rate	100 rate		10 rate	100 rate
	Each	Each		Each	Each
<b>ESCALLONIA berteriana WHITE</b>			<b>E. Robusta. SWAMP</b>		
3 to 4 ft. Gal.....	.40		MAHOGANY		
3 to 4 ft. B.....	.85	.75	4 to 5 ft. Gal.....	.40	.35
4 to 5 ft. B.....	1.00	.85	6 to 8 ft. 5g.....	1.00	
<b>E. exoniensis WHITE</b>			8 to 12 in. Flats 1000 rate 1.50		1.75
2 to 3 ft. Gal.....	.35		<b>E. rostrata. RED GUM</b>		
3 to 4 ft. Gal.....	.40		2 to 3 ft. Qt.....	.20	.15
<b>E. ingrami NEW-RED</b>			4 to 5 ft. Qt.....	.25	.20
2 to 2½ ft. 4P.....	.35		5 to 6 ft. Gal.....	.45	.35
2 to 3 ft. Gal.....	.40		6 to 8 ft. Gal.....	.50	.40
2 to 3 ft. B.....	.85	.75	8 to 12 in. Flats 1000 rate 1.50		1.75
<b>E. langleyensis (Pink)</b>			1½ to 2 ft. Flats 1000 rate 1.75		2.00
2 to 2½ ft. 4P.....	.35	.30	<b>E. rudis. DESERT GUM</b>		
<b>E. macrantha (Red)</b>			2 to 3 ft. Qt.....	.20	.15
2 to 3 ft. B.....	.85	.75	4 to 5 ft. Gal.....	.35	
<b>E. pterocladon (New-Red)</b>			5 to 6 ft. Gal.....	.45	.35
2 to 3 ft. 4P.....	.30	.25	6 to 8 ft. 5g.....	1.00	
3 to 4 ft. 5P.....	.40		8 to 10 ft. 5g.....	1.25	
<b>E. rosea (Pink)</b>			8 to 12 in. Flats 1000 rate 1.75		2.00
1½ to 2 ft. 4P.....	.30	.25	<b>E. sideroxylon-rosea (Deep pink</b>		
2 to 3 ft. 4P.....	.40	.30	flowers)		
2½ to 3½ ft. B.....	.90	.80	2 to 3 ft. Qt.....	.30	.25
<b>E. rubra (Red)</b>			3 to 4 ft. Gal.....	.45	
1½ to 2 ft. Qt.....	.30	.25	4 to 5 ft. Gal.....	.55	
1½ to 2 ft. 4P.....	.35	.30	8 to 10 ft. 5g.....	1.50	1.25
2 to 3 ft. B.....	.85	.75	<b>E. viminalis. MANNA GUM</b>		
3 to 4 ft. B.....	1.00	.85	3 to 4 ft. Qt.....	.25	.20
<b>EUCALYPTUS amplifolia</b>			4 to 5 ft. Qt.....	.35	.25
FOREST GRAY GUM			5 to 6 ft. Gal.....	.50	.40
6 to 8 ft. Gal.....	.60		8 to 12 in. Flats 1000 rate 1.50		1.75
<b>E. corynocalyx. SUGAR GUM</b>			2 to 3 ft. Flats 1000 rate 1.75		2.00
2 to 3 ft. Qt.....	.25	.20	<b>EUONYMUS japonica</b>		
3 to 4 ft. Gal.....	.35	.30	3 to 4 ft. Gal.....	.40	.35
4 to 5 ft. Gal.....	.45		3 to 4 ft. B.....	.65	.55
5 to 6 ft. Gal.....	.60		4 to 5 ft. B.....	.85	.75
8 to 12 in. Flats 1000 rate 1.50		1.75	<b>E. jap. albo marginatus</b>		
<b>E. globulus. BLUE GUM</b>			SILVER EUONYMUS		
2 to 3 ft. Qt.....	.20	.15	3 to 4 ft. 5g.....	.75	
3 to 4 ft. Qt.....	.25	.20	2 to 3 ft. B.....	.60	.50
4 to 5 ft. Gal.....	.35	.30	<b>E. jap. aurea marginatus</b>		
5 to 6 ft. Gal.....	.45	.40	GOLDEN EUONYMUS		
6 to 7 ft. Gal.....	.60	.50	1½ to 2 ft. B.....	.70	.60
6 to 8 ft. 5g.....	1.00		2 to 3 ft. B.....	.90	.80
8 to 12 in. Flats 1000 rate 1.50		1.75	<b>E. jap. aureo variegatus</b>		
2 to 3 ft. Flats 1000 rate 1.75		2.00	8 to 12 in. 4P.....	.30	.25
<b>E. gunni. CIDER GUM</b>			1½ to 2 ft. B.....	.70	.60
8 to 12 in. Flats 1000 rate 1.50		1.75	<b>E. jap. compactus viridis</b>		
<b>E. leucoxylon rosea (Pink flowered)</b>			1½ to 2 ft. B.....	.60	.50
2 to 3 ft. Qt.....	.25	.20	<b>E. jap. microphylla</b>		
8 to 12 in. Flats 1000 rate 2.50		3.00	PULCHELLUS		
<b>E. maculata citriodora</b>			8 to 12 in. 4P.....	.25	.20
LEMON GUM			1 to 1½ ft. 2½g.....	.60	
3 to 4 ft. Gal.....	.50		14 to 16 in. B.....	.60	.50
<b>E. polyanthemos. RED BOX</b>			<b>E. japonica. PRES.</b>		
2 to 3 ft. Qt.....	.25	.20	GAUTHIER		
4 to 5 ft. Gal.....	.45	.40	1 to 1½ ft. 4P.....	.30	.25
8 to 12 in. Flats 1000 rate 1.75		2.00			
1½ to 2 ft. Flats 1000 rate 2.25		2.50			

	10 rate	100 rate		10 rate	100 rate
<i>E. jap. viridivariegatus.</i>			<i>L. nicholli</i>		
DUC D'ANJOU			2 to 3 ft. B.....	1.00	.80
2 to 3 ft. Gal.....	.45	.40	<b>LIGUSTRUM acuminatum</b>		
2 to 3 ft. B. (Bushy).....	.65	.55	(Ciliatum). PRIVET		
4 to 5 ft. B.....	.90	.75	2 to 3 ft. 6P.....	.40	
<i>E. sieboldi</i>			1 to 1½ ft. B.....	.60	
1½ to 2 ft. Gal.....	.40		<i>L. amurense.</i>		
<b>FABIANA imbricata</b>			AMUR PRIVET		
2 to 3 ft. 4P.....	.35		3 to 4 ft. Qt.....	.25	.20
<b>FATSIA japonica.</b>			4 to 5 ft. Gal.....	.45	
aralia sieboldi			<i>L. henryi</i>		
8 to 14 in. 4P.....	.40	.35	8 to 12 in. Qt.....	.20	.15
<b>GENISTA—See CYTISUS</b>			8 to 14 in. 4P.....	.25	.20
<b>GREVILLEA robusta. SILK OAK</b>			2 to 3 ft. Gal.....	.35	.30
4 to 6 ft. 5g.....	1.00		3 to 4 ft. Gal.....	.45	.35
6 to 8 ft. 5g.....	1.25		2 to 3 ft. B.....	.80	.70
<b>HYPERICUM calycinum.</b>			<i>L. japonicum.</i>		
DWARF GOLD FLOWER			JAP. PRIVET		
Qt.....	.20	.15	2 to 3 ft. Qt.....	.20	.15
Gal.....	.30	.25	3 to 4 ft. Qt.....	.25	.20
<i>H. moserianum.</i>			4 to 5 ft. Gal.....	.45	.35
GOLD FLOWER			4 to 5 ft. B.....	1.50	1.25
12 to 14 in. B.....	.60	.50	4 to 5 ft. B. (Standards).....	2.00	1.50
1½ to 2 ft. B.....	.70	.60	<i>L. nanum compactum LODENSE</i>		
<i>H. patulum.</i>			PRIVET		
JAPANESE HYPERICUM			1½ to 2 ft. B.....	.70	.60
1½ to 2 ft. 5P.....	.30		<i>L. ovalifolium.</i>		
<i>H. patulum henryi</i>			CALIF. PRIVET		
2 to 3 ft. Qt.....	.25	.20	2 to 3 ft. Qt.....	.15	.10
1½ to 2 ft. 5P.....	.30	.25	2 to 3 ft. B-R 1000 rate .03½.....	.04	
<b>ILEX opaca. AMERICAN</b>			8 to 12 in. Flats 1000 rate .025	.03	
HOLLY			<i>L. ovalifolium variegatum.</i>		
2 to 3 ft. B.....	1.25		GOLDEN PRIVET		
<b>KNIPHOFIA (Tritoma).</b>			1 to 1½ ft. 4P.....	.25	.20
RED HOT POKER			1½ to 2 ft. Qt.....	.25	.20
10 to 14 in. Qt.....	.20	.15	1½ to 2 ft. Gal.....	.30	.25
<b>LAUROCERASUS caroliniana.</b>			2 to 3 ft. B.....	.70	.60
CAROLINA CHERRY LAUREL			3 to 4 ft. B.....	1.00	.85
3 to 4 ft. 2½g.....	.60	.50	<i>L. sinense.</i>		
4 to 6 ft. 5g.....	1.00		CHINESE PRIVET		
<i>L. officinalis.</i>			1½ to 2 ft. 4P.....	.30	.25
ENGLISH LAUREL			2 to 3 ft. Gal.....	.35	.30
1½ to 2 ft. Gal.....	.40	.35	3 to 4 ft. Gal.....	.45	.35
2 to 3 ft. B. (Bushy).....	1.00	.85	1½ to 2 ft. B.....	.60	.50
<b>LAVENDULA (Blue or White)</b>			<b>*LITHOCARPUS (pasia) densi-</b>		
LAVENDER			flora. TAN OAK		
2 to 3 ft. 4P.....	.30	.25	1 to 1½ ft. 6P.....	.55	
<b>LEONOTIS leonurus.</b>			<b>LONICERA nitida.</b>		
LION'S TAIL			BUSH HONEY-SUCKLE		
1 to 2 ft. Gal.....	.40		1 to 1½ ft. Qt.....	.20	.15
<b>LEPTOSPERMUM chapmani</b>			1½ to 2 ft. Gal.....	.30	.25
2 to 2½ ft. 2½g.....	.75		1½ to 2 ft. B.....	.50	.40
2 to 3 ft. B.....	.90	.80	2 to 3 ft. B.....	.60	.50
<i>L. laevigatum.</i>			<b>*MAHONIA aquifolium.</b>		
AUSTRALIAN TEA TREE			OREGON GRAPE		
1½ to 2 ft. Qt.....	.20	.15	8 to 12 in. 4P.....	.30	.25
2 to 2½ ft. 4P.....	.30	.25	2 to 3 ft. 5g.....	.80	
3 to 4 ft. Gal.....	.50	.40	2 to 3 ft. B.....	.80	.70
2 to 3 ft. B.....	.75	.65	3 to 4 ft. B.....	1.10	.90



	10 rate Each	100 rate Each		10 rate Each	100 rate Each
2½ to 3 ft. 2½g.....	.65	.55	*QUERCUS agrifolia.		
3 to 4 ft. 2½g.....	.80		CALIF. LIVE OAK		
4 to 5 ft. 2½g.....	1.00		3 to 4 ft. 5g.....	1.00	
<b>PSIDIUM cattleianum. STRAW-</b>			4 to 5 ft. 5g.....	1.35	
<b>BERRY GUAVA</b>			6 to 8 ft. 5g.....	1.75	
8 to 12 in. 4P.....	.30	.25	3 to 4 ft. B (Bushy).....	1.25	
1½ to 2 ft. 5P.....	.40	.35	Q. ballota.		
2 to 2½ ft. B.....	.90		HOLLY or HOLM OAK		
3 to 4 ft. B.....	1.15		3 to 4 ft. 5g.....	1.15	
<b>PUNICA granatum nana.</b>			4 to 5 ft. 5g.....	1.35	
<b>DWARF POMEGRANATE</b>			Q. suber. CORK OAK.		
12 to 14 in. B.....	.90	.75	5 to 6 ft. 5g.....	1.75	
<b>PYRACANTHA angustifolia</b>			<b>RAPHIOLEPIS umbellata (Ja-</b>		
1 to 1½ ft. Qt.....	.25	.20	ponia)		
1½ to 2 ft. 4P.....	.30	.25	1½ to 2 ft. B.....	.80	.70
2 to 3 ft. Gal.....	.40	.35	2 to 3 ft. B.....	1.00	.85
5 to 6 ft. Gal.....	.60	.50	*RHAMNUS californica.		
5 to 6 ft. 5g. (Berried).....	1.00	.85	COFFEE BERRY		
2 to 3 ft. B. (Berried).....	.70	.60	6 to 10 in. 4P.....	.25	.20
3 to 4 ft. B. (Berried).....	.85	.75	10 to 14 in. 5P.....	.30	.25
<b>P. coccinea. BURNING BUSH</b>			2½ to 3 ft. 2½g.....	1.00	
1½ to 2 ft. 4P.....	.30	.25	* R. crocea (red berry, very pretty)		
2 to 3 ft. 5P.....	.40	.30	6 to 8 in. 3P.....	.35	.30
2 to 3 ft. 5g. (Berried).....	.70		*RHUS laurina.		
3 to 4 ft. 5g. (Berried).....	.85		EVERGREEN SUMAC		
2 to 3 ft. B. (Berried).....	.65	.55	2 to 3 ft. 4P.....	.45	.40
3 to 4 ft. B. (Berried).....	.80	.70	*ROMNEYA coulteri.		
<b>P. c. lalandi</b>			MATILIJIA POPPY		
1½ to 2 ft. 4P.....	.40	.35	4P.....	.50	.40
2 to 3 ft. 5P.....	.50	.40	5P.....	.60	.50
2 to 3 ft. B. (Berried).....	.80	.70	Gal.....	.70	.60
3 to 4 ft. B. (Berried).....	1.00	.85	<b>ROSMARINUS officinalis.</b>		
<b>P. crenulata</b>			ROSEMARY		
1 to 1½ ft. Qt.....	.25	.20	3 to 4 ft. Gal.....	.50	
2 to 3 ft. 4P.....	.30	.25	<b>SALVIA azurea grandiflora</b>		
2 to 3 ft. Gal.....	.40	.30	(Pitcher)		
3 to 4 ft. 5g. (Berried).....	.75		2½g.....	.60	
4 to 5 ft. 5g. (Berried).....	1.00		<b>S. farinacea</b>		
1½ to 2 ft. B. (Berried).....	.65	.55	2 to 3 ft. 4P.....	.30	
<b>P. formosiana (NEW. VERY</b>			<b>S. greggi (red)</b>		
<b>FINE) (Bright Scarlet Berries)</b>			2 to 2½ ft. 4P.....	.40	.30
1 to 1½ ft. 4P.....	.35	.30	2 to 3 ft. 1g.....	.45	.35
1½ to 2 ft. 5P.....	.40		<b>S. greggi (white)</b>		
3 to 4 ft. 5g.....	1.00		1 to 1½ ft. 4P.....	.30	
4 to 5 ft. 5g.....	1.25		1½ to 2 ft. 5P.....	.40	
2 to 3 ft. B.....	.90		<b>S. rutilans</b>		
<b>P. kensuriensis (NEW, Orange</b>			1 to 1½ ft. 4P.....	.30	.25
<b>Yellow Berries)</b>			<b>SCHINUS molle.</b>		
1 to 1½ ft. 4P.....	.30		CALIF. PEPPER TREE		
2 to 3 ft. Gal.....	.45		1 to 1½ ft. Qt.....	.25	.20
<b>P. yunnanensis (Red Berries)</b>			2 to 3 ft. Gal.....	.35	.30
1 to 1½ ft. 4P.....	.30	.25	5 to 6 ft. 5g.....	1.00	
1½ to 2 ft. Qt.....	.35	.30	<b>S. terebinthifolius.</b>		
2 to 3 ft. Gal.....	.45	.40	BRAZILIAN PEPPER TREE		
3 to 4 ft. 2½g.....	.75		5 to 6 ft. Gal.....	.60	
2 to 3 ft. B.....	.80	.65			

	10 rate Each	100 rate Each		10 rate Each	100 rate Each
<b>STERCULIA diversifolia.</b> BOTTLE TREE			<b>V. reevesi</b>		
2 to 3 ft. Gal.....	.45	.40	1½ to 2 ft. B.....	.60	.50
<b>TEUCRIUM fruticans</b>			<b>VIBURNUM suspensum</b> (Sandankwa)		
2 to 3 ft. Gal.....	.40	.30	8 to 12 in. 4P.....	.35	.30
3 to 4 ft. Gal.....	.50	.40	1 to 1½ ft. 5P.....	.45	
2 to 3 ft. B.....	.80		2 to 3 ft. B.....	1.00	.80
<b>TRACHELIUM caeruleum.</b> THROATWORTH			<b>V. tinus (Laurustinus)</b>		
1½ to 2 ft. 4P.....	.25		8 to 12 in. 4P.....	.25	.20
<b>ULEX europaeus.</b> GORSE			1 to 1½ ft. 4P.....	.35	.30
1 to 1½ ft. 4P.....	.25	.20	1½ to 2 ft. Gal.....	.40	.35
2 to 3 ft. B.....	.70	.60	3 to 4 ft. 5g.....	.85	
<b>U. e. nana.</b> DWARF GORSE			2 to 3 ft. B.....	.70	.60
1 to 1½ ft. Gal.....	.30	.25	<b>V. t. grandiflorum</b>		
<b>*UMBELLULARIA californica.</b> CALIF. LAUREL or BAY TREE			1 to 1½ ft. 4P.....	.35	.30
8 to 12 in. 4P.....	.40	.35	1½ to 2 ft. 5P.....	.40	.35
2 to 3 ft. B.....	.80	.65	<b>V. t. variegatum</b>		
<b>*VACCINIUM ovatum.</b> HUCKLE- BERRY.			8 to 12 in. 4P.....	.30	.25
1 to 1½ ft. Gal.....	.50		1½ to 2 ft. 5P.....	.45	
<b>VERONICA andersoni</b>			2 to 3 ft. B.....	.85	
1½ to 2 ft. B.....	.60		<b>YUCCA filamentosa</b> COMMON YUCCA		
2 to 3 ft. B.....	.75		8 to 10 in. Qt.....	.25	
<b>V. a. variegata</b>			8 to 10 in. 4P.....	.30	
1 to 1½ ft. 4P.....	.30	.25	<b>*YUCCA whipplei</b> SPANISH BAYONET		
1½ to 2 ft. B.....	.60	.50	12 to 15 in. 4P.....	.30	
<b>V. buxifolia</b>					
12 to 14 in. B.....	.50	.40	<b>DECIDUOUS SHADE AND FLOWERING TREES AND SHRUBS</b>		
<b>V. chathamica</b>			<b>ACER dasycarpum (saccharinum)</b> SILVER MAPLE		
1 to 1½ ft. 5P.....	.30		4 to 6 ft. B-R.....	.50	.40
1½ to 2 ft. B.....	.60	.50	6 to 8 ft. 5g.....	.85	
<b>V. cupressoides</b>			<b>A. negundo</b> BOX ELDER		
1 to 1½ ft. B. (Bushy).....	.60	.50	4 to 6 ft. B-R.....	.40	
<b>V. decussata</b>			6 to 8 ft. B-R.....	.50	
1 to 1½ ft. Gal.....	.40	.35	<b>A. palmatum</b> JAPANESE MAPLE		
1 to 1½ ft. B.....	.50	.40	2 to 3 ft. Gal.....	.60	.50
1½ to 2 ft. B.....	.60	.50	<b>A. rubrum.</b> SCARLET MAPLE		
2 to 2½ ft. B.....	.70		3 to 4 ft. B-R.....	.40	
<b>V. d. variegata</b>			4 to 6 ft. B-R.....	.50	
1 to 1½ ft. Gal.....	.40	.35	<b>*AMORPHA californica</b> INDIGO SHRUB		
1½ to 2 ft. B.....	.60	.50	4 to 6 ft. B-R.....	.65	
<b>V. glaucophylla</b>					
6 to 10 in. 4P.....	.25	.20	<b>Flowering Almonds</b>		
<b>V. imperialis</b>			<b>AMYGDALUS communis nana</b> (Dble., pink dwarf Flowering Almond)		
8 to 12 in. 4P.....	.35	.30	2 to 3 ft. B-R.....	.45	.35
1½ to 2 ft. B.....	.65	.55	3 to 4 ft. B-R.....	.55	.45
1 to 1½ ft. B.....	.55	.45			
2 to 3 ft. B.....	.80	.70			
<b>V. pimeleoides</b>					
8 to 10 in. 4P.....	.30	.25			
14 to 16 in. B. (Bushy).....	.70	.60			
<b>V. pinquifolia</b>					
10 to 12 in. B.....	.50	.40			
12 to 14 in. B.....	.60	.50			

## Flowering Peaches

	10 rate	100 rate		10 rate	100 rate
	Each	Each		Each	Each
<b>AMYGDALUS persica.</b> FLOW- ERING PEACH. Burbank Pink, Camelliaflora (dble. pink), Dble. Pink, Early Dble. Cerise, Early Dble. Red, Genbei (variegated), Late Dble. Pink, Late Dble. Red, Very Late Dble. Red, Dble. White.					
3 to 4 ft.....	.50	.40			
4 to 5 ft.....	.60	.50			
5 to 6 ft.....	.70	.60			
<b>AMYGDALUS persica</b> (Crimson leaf, dark pink flowering peach) A NOVELTY					
3 to 4 ft. B-R.....	.65	.55			
4 to 5 ft. B-R.....	.75	.65			
5 to 6 ft. B-R.....	.85	.75			
<b>BERBERIS vulgaris.</b> COMMON BARBERRY					
3 to 4 ft. Gal.....	.50				
<b>BETULA alba.</b> WHITE BIRCH					
3 to 4 ft. Gal.....	.45				
4 to 5 ft. Gal.....	.55				
<b>CALYCANTHUS floridus</b> SWEET SHRUB					
1 to 1½ ft. B-R.....	.30	.25			
* <b>C. occidentalis.</b> CALIF. SWEET SHRUB					
1½ to 2 ft. Gal.....	.35				
<b>CARYOPTERIS incana.</b> BLUE SPIREA					
2 to 3 ft. 4P.....	.30				
3 to 4 ft. Gal.....	.40				
4 to 5 ft. Gal.....	.50				
<b>CATALPA speciosa.</b> WESTERN CATALPA					
4 to 6 ft. B-R.....	.40				
6 to 8 ft. 5g.....	.65				
6 to 8 ft. B-R.....	.50				
8 to 10 ft. B-R.....	.65				
* <b>CEPHALANTHUS occidentalis</b> BUTTON BUSH					
3 to 4 ft. Gal.....	.40				
* <b>CERCIS occidentalis.</b> CALIF. RED BUD					
2 to 3 ft. B-R.....	.40				
<b>CORNUS amomum.</b> SILKY DOG- WOOD					
2 to 3 ft. B-R.....	.30				
* <b>C. californica.</b> CREEK DOG- WOOD					
2 to 3 ft. Gal.....	.35				
<b>C. sanguinea.</b> BLOODTWIG DOGWOOD					
2 to 3 ft. B-R.....	.30				
<b>C. stolonifera.</b> RED-OSIER DOGWOOD					
2 to 3 ft. B-R.....	.30				
<b>CRATAEGUS oxycantha</b> HAWTHORNE, dble. pink; paul's scarlet, (dble red)					
4 to 6 ft. 2½g.....	.50				
4 to 6 ft. Gal.....	.40				
3 to 4 ft. B-R.....	.40	.35			
4 to 6 ft. B-R.....	.50	.40			
<b>DEUTZIA scabra crenata</b>					
6 to 8 ft. B-R.....	.70				
2 to 3 ft. B-R.....	.30				
3 to 4 ft. B-R.....	.35				
4 to 5 ft. B-R.....	.45				
<b>EXOCHORDA grandiflora</b> PEARL BUSH					
3 to 4 ft. B-R.....	.30	.25			
4 to 6 ft. B-R.....	.35	.30			
<b>FRAXINUS americana.</b> WHITE ASH					
4 to 6 ft. B-R.....	.40				
6 to 8 ft. B-R.....	.50	.40			
8 to 10 ft. B-R.....	.65	.60			
<b>HYDRANGEA.</b> E. G. Hill, Hortensis, La Pearl, Mme. L. Moulliere, Mme. C. S. Rich, Nigra, paniculata, radi- ant.					
1 to 1½ ft. Gal.....	.40				
1 to 1½ ft. 2½g.....	.60				
<b>KERRIA japonica</b> (Double) JAP. ROSE					
4 to 5 ft. Gal.....	.60	.50			
5 to 6 ft. Gal.....	.75	.65			
<b>K. j.</b> (Single) JAP. ROSE					
3 to 4 ft. Gal.....	.50	.40			
<b>KOELREUTERIA paniculata</b> VARNISH TREE					
3 to 4 ft. Gal.....	.50				
4 to 5 ft. Gal.....	.65				
6 to 8 ft. B-R.....	1.00				
<b>LAGERSTROEMIA indica</b> (Pink) CRAPE MYRTLE					
1½ to 2 ft. Gal.....	.40				
<b>Liquidambar styraciflua</b> SWEETGUM					
10 to 12 ft. B-R.....	3.00				
<b>LONICERA fragrantissima</b> WINTER HONEYSUCKLE					
3 to 4 ft. B-R.....	.50				
4 to 5 ft. B-R.....	.60				
<b>L. grandiflora</b> BRIDE HONEYSUCKLE					
3 to 4 ft. Gal.....	.50				
3 to 4 ft. B-R.....	.45				
<b>Flowering Apples</b>					
<b>MALUS floribunda purpurea</b> PURPLE JAP. FLOW. CRAB.					
4 to 6 ft. 5g.....	.80				
6 to 8 ft. B-R.....	.70				
<b>M. ioensis plena</b> (Bechtel Crab)					



	10 rate Each	100 rate Each		10 rate Each	100 rate Each
<b>DOUBLE PINK</b>					
3 to 4 ft. Gal. ....	.60				
4 to 5 ft. 5g .....	.85				
3 to 4 ft. B-R .....	.60	.50			
4 to 5 ft. B-R .....	.70	.60			
<b>MELIA azedarach TEXAS</b>					
<b>UMBRELLA TREE</b>					
4 to 6 ft. B-R .....	.50				
6 to 8 ft. B-R .....	.60				
<b>MORUS tartarica RUSSIAN</b>					
<b>MULBERRY</b>					
2 to 3 ft. Gal. ....	.35	.30			
3 to 4 ft. Gal. ....	.40				
<b>PAULOWNIA tomentosa (Imperialis) EMPRESS TREE</b>					
12 to 14 ft. B-R .....	.90				
<b>POPULUS alba. WHITE POPLAR</b>					
3 to 4 ft. B-R .....	.45	.40			
4 to 5 ft. B-R .....	.55	.45			
<b>P. deltoides carolinensis.</b>					
<b>CAROLINA POPLAR</b>					
4 to 6 ft. B-R .....	.50	.40			
6 to 8 ft. B-R .....	.60	.50			
<b>P. nigra italica LOMBARDY</b>					
<b>POPLAR</b>					
5 to 6 ft. 5g .....	.50				
6 to 8 ft. 5g .....	.60				
8 to 10 ft. 5g .....	.70				
10 to 12 ft. 5g .....	.80				
12 to 14 ft. 5g .....	1.00				
4 to 6 ft. B-R .....	.40				
6 to 8 ft. B-R .....	.50				
<b>P. simoni fastigiata NARROW</b>					
<b>SIMON POPLAR</b>					
8 to 10 ft. 5Gal. ....	.60				
10 to 12 ft. 5g .....	.70				
10 to 12 ft. B-R .....	.70				
<b>*PRUNUS demissa. WESTERN</b>					
<b>CHOKE CHERRY</b>					
2 to 3 ft. Gal. ....	.50				
4 to 6 ft. 5g .....	1.00				

## Flowering Plums and Apricots

<b>PRUNUS moseri FLOWERING</b>					
<b>PLUM, purple leaves &amp; dble. pink flowers</b>					
4 to 6 ft. B-R .....	.70	.60			
6 to 8 ft. B-R .....	.85	.70			
<b>P. mme dorborn (Flw. plum- Bright pink flowers)</b>					
4 to 6 ft. B-R .....	.70	.60			
6 to 8 ft. B-R .....	.85	.70			
<b>P. MUME (Dawn) JAP. FLW. APRICOT (very early bloomer- pink)</b>					
4 to 6 ft. ....	.70	.60			
6 to 8 ft. ....	.85	.70			
<b>P. pissardi (purple leaved plum)</b>					
4 to 6 ft. B-R .....	.60	.50			
6 to 8 ft. B-R .....	.75	.60			
<b>P. vesuvius (Flw. plum-purple foliage very fine)</b>					
4 to 6 ft. B-R .....	.70	.60			
6 to 8 ft. B-R .....	.85	.70			
<b>Flowering Cherries</b>					
<b>PRUNUS pseudo cerasus</b>					
<b>FLOWERING CHERRY</b>					
<b>Dble pink</b>					
3 to 4 ft. 5g .....	1.35				
4 to 5 ft. 5g .....	1.60				
<b>Dble white</b>					
4 to 5 ft. 5g .....	1.60				
<b>Dble. pink, rose pink, shell pink, dble. white</b>					
2 to 3 ft. B-R .....	1.00	.75			
3 to 4 ft. B-R .....	1.25	1.00			
4 to 5 ft. B-R .....	1.50	1.25			
<b>PUNICA granatum (Dble red)</b>					
<b>FLW. POMEGRANATE</b>					
2 to 3 ft. Gal. ....	.35				
2 to 3 ft. B-R .....	.30	.25			
3 to 4 ft. B-R .....	.45	.35			
<b>P. G. (Dble White)</b>					
2 to 3 ft. Gal. ....	.35				
3 to 4 ft. B-R .....	.45				
<b>ROBINA Pseudoacacia BLACK</b>					
<b>LOCUST</b>					
4 to 6 ft. B-R .....	.40				
6 to 8 ft. B-R .....	.50				
<b>SALIX discolor PUSSY WILLOW</b>					
5 to 6 ft. 2½g .....	.60				
6 to 8 ft. 5g .....	.70				
4 to 5 ft. B-R .....	.50				
<b>SPIRAEA Anthony waterer</b>					
2 to 3 ft. Gal. ....	.40				
<b>S. reevesiana</b>					
2 to 3 ft. B-R .....	.35				
<b>S. thunbergi</b>					
2 to 3 ft. Gal. ....	.40				
1½ to 2 ft. B-R .....	.30				
<b>S. vanhouttei</b>					
2 to 3 ft. B-R .....	.35				
<b>SYMPHORICARPOS orbiculatus</b>					
<b>INDIAN CURRANT—Coral Berry</b>					
3 to 4 ft. Gal. ....	.50				
4 to 5 ft. Gal. ....	.60				
3 to 4 ft. B-R .....	.45				
<b>SYRINGA chinensis nana CHINESE</b>					
<b>DWARF LILAC</b>					
8 to 12 in. 4P .....	.30	.25			
2 to 3 ft. Gal. ....	.50				
<b>S. vulgaris LAVENDER LILAC</b>					
3 to 4 ft. Gal. ....	.60				

	10 rate	100 rate		10 rate	100 rate
	Each	Each		Each	Each
<b>S. v. PURPLE LILAC</b>					
1½ to 2 ft. B-R .....	.30		<b>EUONYMUS radicans WINTER</b>		
2 to 3 ft. B-R .....	.40		CREEPER 4P .....	.25	.20
<b>ULMUS Americana AMERICAN</b>			<b>FICUS pumila (repens) CLIMBING</b>		
OR WHITE ELM			FIG 4P .....	.40	.35
4 to 5 ft. 2½g .....	.40		<b>GELSEMIUM sempervirens CARO-</b>		
5 to 6 ft. 5g .....	.75		LINA YELLOW JASMINE 4P.....	.30	
5 to 6 ft. B-R .....	.50		<b>HEDERA amurensis LARGE LEAF</b>		
6 to 8 ft. B-R .....	.55		IVY 5P .....	.35	
<b>WEIGELA (Diervilla) amabilis</b>			Gal. ....	.45	
ROSE WEIGELA			<b>H. helix ENGLISH IVY Qt. ....</b>	.20	.15
2 to 3 ft. B-R .....	.35		Gal. ....	.35	.30
<b>W. hybrida hendersoni (Deep</b>			<b>H. helix dentata aurea GOLDEN</b>		
rose flowers)			GIANT IVY 4P .....	.30	.25
2 to 2½ ft. B-R .....	.35		<b>H. helix EMERALD GEM</b>		
			Gal. ....	.40	
			<b>H. helix maculata minor. (Small</b>		
			leaf variegated ivy) .....	.30	.25
			Gal. ....	.45	

**CLIMBING AND TRAILING PLANTS**

<b>AKEBIA quinata. Gal. ....</b>	.50	.40
<b>AMPELOPSIS henryana SILVER</b>		
VEIN CREEPER 5P .....	.50	
<b>A. heterophylla PORCELAIN</b>		
AMPELOPSIS Gal. ....	.45	
<b>A. quinquefolia VIRGINIA</b>		
CREEPER Qt. ....	.25	.20
<b>A. tricuspidata. BOSTON IVY</b>		
4P .....	.30	.25
<b>ASPARGUS sprengeri 4P .....</b>	.25	.20



ENGLISH IVIES

<b>HELIANTHEMUM SUN ROSE</b>		
Apricot, Bronze, Cream, Pink,		
Red, Dble. red, Rose, White,		
Yellow. 4P .....	.20	.17½
3P .....	.15	.12½
<b>HEUCHERIA sanguinea CORAL</b>		
BELLS 3P .....	.15	.10
<b>JASMINUM bessianum ROSY</b>		
JASMINE Gal. ....	.30	.25
<b>J. humile (Yellow). ITALIAN</b>		
JASMINE. 6P. ....	.40	.30
<b>J. primulinum PRIMROSE</b>		
JASMINE 5P .....	.35	
6P .....	.40	
2 to 3 ft. B.....	.75	
4 to 5 ft. B.....	1.00	
<b>LIPPIA canescens (L. repens) LIPPIA</b>		
GRASS Flats .....	.75	
<b>*LONICERA Californica WILD</b>		
HONEYSUCKLE 4P .....	.35	.30
<b>L. chinensis CHINESE HONEY-</b>		
SUCKLE Gal. ....	.35	.30
<b>L. japonica halliana HALL'S</b>		
JAP. HONEYSUCKLE Qt. ....	.20	.15
Gal. ....	.35	
<b>PASSIFLORA incarnata BLUE</b>		
PASSIONFLOWER 4P .....	.40	
<b>P. manicata SCARLET PASSION</b>		
VINE 4P .....	.40	
<b>PLUMBAGO capensis CAPE</b>		
PLUMBAGO 4P .....	.30	.25
<b>SOLLYA heterophylla AUSTRALIAN</b>		
BLUEBELL CREEPER Qt. ....	.30	.25
Gal. ....	.45	.40
<b>VINCA major variegata VARIE</b>		
GATED PERIWINKLE Qt. ....	.20	.15
<b>VINCA minor SMALL LEAF PER-</b>		
IWINKLE. Qt. ....	.15	.12½
<b>V. m. alba (White flowers) Qt. ....</b>	.15	.12½

## LINING-OUT STOCK

<b>ABIES balsamea BALSAM FIR</b>	
4 to 6 in. Flats .....	.06
<b>ACACIA armata</b>	
6 to 8 in. Flats .....	.06
<b>A. cultriformis KNIFE-BLADE</b>	
ACACIA 3 to 6 in. Flats .....	.05
<b>A. melanoxylon BLACK ACACIA</b>	
8 to 10 in. Flats .....	.04
<b>A. saligna WILLOW ACACIA</b>	
8 to 10 in. 2½P .....	.06
<b>A. verticillata</b>	
6 to 8 in. Flats .....	.06
<b>ALBIZZIA julibrissin PINK ACACIA</b>	
8 to 10 in. 3P .....	.12
<b>ASPARAGUS sprengeri 2½P</b> .....	.06
<b>BERBERIS sargentii 6 to 10 in. 2¼P</b> .....	.09
<b>B. stenophylla 6 to 10 in. 2½P</b> .....	.08
<b>BUDDLEIA globosa GLOBE BUTTER-FLY BUSH</b> 6 to 10 in. 2½P .....	.07
<b>CALLISTEMON rigidus BOTTLE BRUSH</b> 6 to 10 in. 2&2¼P .....	.08
* <b>CALYCANTHUS occidentalis CALIF. SWEET SHRUB</b> 8 to 10 in. B-R .....	.05
<b>CARMICHAELIA odorata (NEW)</b> 6 to 12 in. 2½P .....	.08
<b>CASSIA tomentosa 6 to 10 in. 2½P</b> .....	.08
* <b>CEANOTHUS arboreus hybrida</b> 3 to 6 in. 2½P .....	.08
* <b>C. spinosus 3 to 6 in. 2¼P</b> .....	.08
<b>CEDRUS atlantica MT. ATLAS CEDAR</b> 6 to 8 in. 2½P.....	.12
<b>C. libani CEDAR OF LEBANON</b> 4 to 8 in. 2½P.....	.12
<b>CERATOSTIGMA plumbaginoides (Plumbago larpentae)</b> Flats .....	.04
2¼P .....	.05
<b>CESTRUM auranticum</b> 1 to 2 ft. 2½P .....	.06
<b>CHAMAECYPARIS ericoides</b> 8 to 12 in. Flats .....	.05
<b>CORREA japonica alba</b> 10 to 14 in. 2P .....	.07
<b>COTONEASTER franchetti</b> 3 to 6 in. 2½P .....	.08
<b>C. frigida 4 to 8 in. 2¼&amp;2½P</b> .....	.07
<b>C. microphylla 6 to 10 in. 2½P</b> .....	.08
<b>C. pannosa 3 to 6 in. 2¼P</b> .....	.07
<b>CRYPTOMERIA elegans PLUME CRYPTOMERIA</b> 4 to 8 in. 2½P .....	.09
<b>CUPRESSUS arizonica. ARIZONA CYPRESS</b> 3 to 6 in. Flats .....	.03½
1½ to 2 ft. Flats .....	.05
<b>C. btthami knightiana</b> 1 to 1½ ft. Flats .....	.06
* <b>C. goveniana GOWEN CYPRESS</b> 6 to 8 in. Qt. ....	.10
* <b>C. macrocarpa MONTEREY CYPRESS</b> 8 to 12 in. Flats .....	.04
<b>C. sempervirens ITALIAN CYPRESS</b> 8 to 12 in. Flats .....	.07
<b>CYTISUS canariensis</b> 4 to 8 in. 2½P .....	.07
<b>DIOSMA ericoides BREATH-OF-HEAVEN</b> 3 to 6 in. 2P .....	.07
8 to 12 in. 2P .....	.08
<b>ESCALLONIA berteriana</b> 10 to 16 in. 2½P .....	.08
<b>E. ingrami 6 to 10 in. 2½P</b> .....	.08
<b>E. pterocladon (NEW)</b> 8 to 12 in. 2½P .....	.08
<b>EUONYMUS japonica compactus viridis</b> 8 to 12 in. Flats .....	.04
<b>E. jap. microphylla PULCHELLUS</b> 3 to 6 in. Flats .....	.04
<b>E. jap. viridivariegatus</b> 4 to 8 in. 3P .....	.10
<b>FABIANA imbricata</b> 6 to 10 in. 2½P .....	.08
<b>FESTUCA glauca BLUE FESCUE</b> 2½P .....	.07
Flats .....	.04
<b>FORSYTHIA viridissima GOLDEN BELL</b> 1 to 1½ ft. Flats .....	.06
<b>HAKEA laurina SEA URCHIN</b> 3 to 6 in. 2½P .....	.08
<b>HALESIA tetraptera GREAT SILVER BELL</b> 4 to 8 in. 2½P .....	.10
<b>HYPERICUM moserianum GOLD FLOWER</b> 4 to 8 in. 2½P .....	.08
8 to 10 in. 2½P .....	.09
<b>H. patulum henryi</b> 6 to 10 in. 2½P .....	.08
<b>JACARANDA ovalifolia</b> 3 to 6 in. 2¼P .....	.09
<b>JASMINUM humile (Yellow). ITALIAN JASMINE</b> 2½P .....	.08
<b>J. primulinum PRIMROSE JASMINE</b> 2½P .....	.08
<b>KNIPHOFIA (Tritoma) RED HOT POKER</b> 10 to 14 in. 2½P.....	.06
<b>LEONOTIS leonurus. LION'S TAIL</b> 8 to 12 in. 2½P .....	.08
<b>LIGUSTRUM henryi</b> 4 to 6 in. 2½P.....	.08
<b>L. japonicum JAP. PRIVET</b> 6 to 8 in. Flats .....	.04
<b>LONICERA Jap. chinensis CHINESE HONEYSUCKLE</b> 2¼P .....	.07
<b>L. Japonica halliana HALL'S JAP. HONEYSUCKLE</b> 2¼P .....	.07

MAGNOLIA hypoleuca SILVER	
MAGNOLIA 6 to 10 in. 2½P.....	.15
*MAHONIA aquifolium OREGON	
GRAPE 3 to 6 in. 2½P .....	.08
MELALEUCA hypericifolia (Rich red flowers) 4 to 8 in. 2½P .....	.08
MUEHLENBECKIA platycada RIBBON BUSH 6 to 10 in. 2½P .....	.09
MYRTUS communis ENGLISH MYRTLE 4 to 8 in. 2¼P .....	.08
M. c. microphylla	
6 to 10 in. 2P .....	.08



LATH HOUSE VIEW

NERIUM OLEANDER Rose Pink, Dble.	
6 to 10 in. 2½P .....	.07
PHILADELPHUS mexicanus. MOCK-ORANGE 8 to 12 in. 2½P .....	.07
*PHOTINIA arbutifolia TOYON	
4 to 6 in. 2½P .....	.10
*PICEA engelmanni ENGLEMAN'S SPRUCE 2 to 4 in. 2P .....	.12
*PINUS radiata MONTEREY PINE	
6 to 10 in. Flats .....	.05
PYRACANTHA angustifolia	
6 to 10 in. 2½P .....	.07
P. yunnanensis 8 to 12 in. 2½P .....	.08

SALVIA greggi (Red)	
8 to 12 in. 2½P .....	.07
SCHINUS molle PEPPER TREE	
4 to 8 in. 2½P .....	.06
3 to 6 in. Flats .....	.04
S. terebinthifolius BRAZILIAN PEPPER TREE	
3 to 6 in. 2¼P .....	.07
SOLANUM pseudocapsicum JERUSALEM CHERRY	
2 to 4 in. 2P .....	.06
3 to 6 in. Flats .....	.05
TEUCRIUM fruticans	
8 to 12 in. 2P .....	.07
1 to 1½ ft. Flats .....	.06
THUJA orientalis ARBORVITAE	
3 to 6 in. Flats .....	.05
ULEX europeus GORSE	
10 to 14 in. 2P .....	.07
U. e. nana DWARF GORSE	
6 to 10 in. 2½P .....	.07
6 to 10 in. Flats .....	.05
*VACCINIUM ovatum HUCKLEBERRY	
3 to 6 in. 2P .....	.08
VERONICA chathamica	
6 to 8 in. 2½P .....	.07
V. decussata	
6 to 10 in. 2½P .....	.05
V. d. variegata	
8 to 12 in. 2½P .....	.07
V. hulkeana	
6 to 10 in. 2¼P .....	.07
V. imperialis	
6 to 10 in. 2½P .....	.08
V. pimeleoides	
3 to 6 in. 2½P .....	.06
V. reevesi	
6 to 10 in. 2½P .....	.07
V. traversi	
6 to 10 in. 2¼P .....	.07
VIBURNUM tinus LAURUSTINUS	
3 to 6 in. 2½P .....	.08
*YUCCA whipplei SPANISH BAY-ONET 8 to 12 in. 2½P .....	.09

The foregoing list includes stocks of which we can supply in large quantities. We are continually growing and adding new varieties, so if you do not find your wants listed, write for further information and prices.

**ASK US FIRST.**

## GENERAL INDEX

	Page
Climbing and Trailing Plants .....	16
Conifers .....	5 & 6
Contracts .....	2
Deciduous Shade & Flowering Trees .....	13 to 16
Deciduous Shrubs .....	13 to 16
Evergreen Trees & Shrubs .....	6 to 13
Explanation of Abbreviations .....	2
Floral Department .....	19
Flowering Almonds .....	13
Flowering Apples .....	14 & 15
Flowering Cherries .....	15
Flowering Peaches .....	14
Flowering Plums and Apricots .....	15
Fruit and Nut Tree Department .....	3 & 4
Fruit Trees - Budded .....	4
Lining-out Stock .....	17 & 18
Native California Trees & Shrubs .....	2
Nut-bearing Trees .....	4
Ornamental Department .....	5 to 18
Rose Stocks .....	3
Seedlings—Fruit Tree .....	3
Seedlings—Ornamental .....	3
Sub-Tropical Fruit Trees .....	4
Terms and Conditions of Sale .....	2

## FLORAL DEPARTMENT

In connection with our main office and salesyard in SAN JOSE, we maintain a first class **Floral Store** in charge of Floral Artists.

Our stock is complete, and we can supply flowering and ornamental plants—cut flowers—floral pieces and floral work for all occasions, subject to our usual discount.

Orders accepted for all points in the Santa Clara Valley. Wire your instructions, or telephone Santa Clara 193.

## Leonard Coates Nurseries

Members:- Florists Telegraph Delivery Association.

1835  
The Alameda



San Jose  
California

---

# Specials

Acacias	See Page 6 & 7
Cedrus Atlantica	" " 5
Chamaecyparis lawsoniana (Lawson Cypress)	" " 5
Cinnamomum camphora (Camphor Tree)	" " 7
Cotoneasters	" " 8
Cryptomeria elegans	" " 5
Cryptomeria japonica (Jap Redwood)	" " 5
Cupressus arizonica (Arizona Cypress)	" " 5
Eucalyptus	" " 9
Euonymus	" " 9 & 10
Flowering cherries	" " 15
Flowering Peaches	" " 14
Helianthemum (Sun Rose)	" " 16
Ligustrum ovalifolium (Calif. privet)	" " 10
Nandina domestica	" " 11
Nerium (Oleander)	" " 11
*Photinia arbutifolia (Toyon)	" " 11
*Prunus ilicifolia (Wild cherry)	" " 11
Pyracanthas	" " 12
*Romneya coulteri (Matilija Poppy)	" " 12
*Sequoia sempervirens (California Redwood)	" " 6

**LEONARD COATES NURSERIES**

SAN JOSE : CALIFORNIA

---